






+86 400 660 8329

www.sailuntire.com

REV 22.01



 @SAILUNTYREHQ  @TYRESAILUN  @SAILUNTYREHQ

MINING - CONSTRUCTION TIRE CATALOG



SAILUN GROUP

Stock Code: 601058



Ranked 17th among global tire companies



13,000 employees worldwide committed to meeting your needs



Our global facilities include 4 R&D centers, 10 sales centers and 7 production plants, with products sold in over 180 countries and regions

WHY SAILUN ?

GLOBAL INTELLIGENT MANUFACTURING

Sailun has 7 smart tire production plants located in China and Vietnam. These factories utilize big data cloud platforms tailored to meet tire demand and keep up with rapid growth. This allows for the real-time optimization and intelligent management of our manufacturing and supply chain networks in order to improve the quality and efficiency of supply chain operations.

LEADING R&D SYSTEM

Sailun has invested heavily in setting up R&D centers in Qingdao (R&D headquarters), Vietnam, Europe and North America that enable us to better understand local user needs. These centers employ cutting-edge technology to establish a sophisticated global R&D system. From market research, product planning, and tire structure design to product verification and testing during the entire development process, the R&D system provides the capabilities to develop a full range of products specifically designed to meet market requirements.

SOPHISTICATED PRODUCT DEVELOPMENT

Sailun's product development is market oriented in order to develop products that meet customer and consumer demands. Our range of products that meet customer and consumer demands. Our range of products include passenger car tires, commercial vehicle tires and other specialty tires.

ESTABLISHED BRAND

Brand value is not only reflected in Sailun products' quality, but also in every stage of Sailun tires' life cycle. Over 20 years Sailun has cultivated a brand that has gained customers' trust and will continue to invest in building a world-class brand to top tier competitors.

LOCALIZED CUSTOMER SUPPORT

Sailun has always maintained a business strategy of 'Think Global, Act Local'. Customer support channels have been established in various parts of the world and are equipped with professional staff who can provide local technical, sales, marketing, and branding support.

VISION Become a globally recognized company in the tire industry by 2025 through the establishment of technological autonomy and intelligent manufacturing.

TECHNOLOGICAL AUTONOMY

Sailun Group has invested heavily in setting up R&D centers in Qingdao (R&D headquarters), Vietnam, Europe and North America. These centers establish a sophisticated global R&D system which enables Sailun to better meet user needs at a local level and develop products that meet their needs. From market research, product planning, and tire structure design to product verification and testing of the entire development process, the R&D system provides the capabilities to develop a full range of products designed specifically to market requirements.



THE TIRE AND RIM ASSOCIATION INC.

In 2016, Sailun joined the US Tire and Rim Association Inc., a significant step towards becoming an organization of international standards.

PATENTS

Sailun has filed over 460 invention and design patent applications, and has been involved in establishing 130 international industry standards.



STANDARDS

Sailun's products have received certification in 20 countries including China's CCC, US's DOT, Europe's ECE, Brazil's INMETRO and GCC in the Middle East. Sailun has also been awarded certification for meeting IATF16949 quality management system, ISO14001 environmental management system and OHSAS18001 occupational health and safety management system standards. Sailun's laboratory has also obtained Spain's IDIADA and Germany's TUV certification.



ISO/TSI16949体系认证 ISO14001环境管理体系 OHSAS18001 职业健康安全体系 西班牙IDIADA TUV认证

PROFESSIONAL LAB TESTING

Sailun's R&D center is an industry-leading facility equipped with a professional tire laboratory, which has received CNAS, TUV, IDIADA, CCC, ISO9000, DOT, ECE, INMETRO, SONCAP and other certifications.



INTELLIGENT MANUFACTURING

Sailun is committed to developing intelligent systems in R&D, production and manufacturing, supply chain, digital marketing, retail and end-consumer services. The intelligent systems allow the company to efficiency transparency and efficiency as well as promote collaboration across the entire business chain.



SUPPLY

DEMAND

Supplier Collaboration Platform

R&D Collaboration Platform

Integrated Supply Chain Platform

Channel Marketing Platform

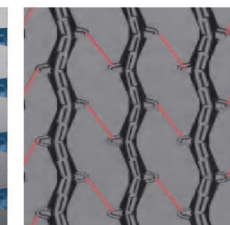
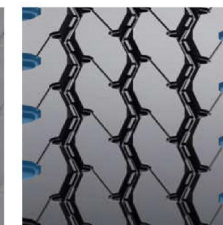
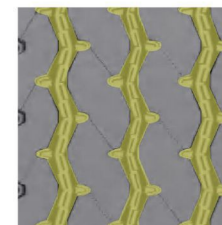


S850



Versatile Heavy Loader

The S850 is an all position tire for heavy-duty trucks with 250% load capacity traveling on mixed road applications.



Features

Vertical zigzag design and horizontal pattern

Wide and deep lateral grooves with a stepped shoulder design

Tread sipe design

Benefits

Able to travel on various road surfaces, provides good directional and skid resistance capabilities. Stepped groove design reduces stone retention

Good heat dissipation, durability and traction on various road surfaces

Enhances driving safety on wet road conditions

Size	L.I. / S.R.	P.R.	T.D. mm	RIM inch	O.D. mm	S.W. mm	S.L.R. inch	L.C.C.				
								Single(kg)	Dual(kg)	A.P.(kPa)	A.P.(PSI)	
CN	10.00R20	149/146K	18PR	15.2	7.5	1054	278	19.13	3250	3000	930	135
	11.00R20	152/149K	18PR	15.7	8.0	1085	293	19.65	3550	3250	930	135
	11.00R20	152/149K	20PR	15.7	8.0	1085	293	19.65	3550	3250	930	135
	12.00R20	154/151K	20PR	15.5	8.5	1125	315	20.31	3750	3450	830	120
	12.00R20	154/151K	22PR	15.5	8.5	1125	315	20.31	3750	3450	830	120
	12.00R20	154/151K	22PR	15.5	8.5	1125	315	20.31	3750	3450	830	120



S750



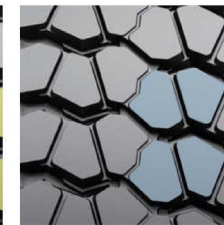
Durable and Long-Lasting

The S750 is a drive position tire for heavy-duty trucks with 250% load capacity traveling on mixed road applications.

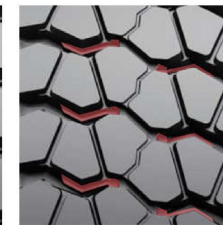
Size	L.I. / S.R.	P.R.	T.D. mm	RIM inch	O.D. mm	S.W. mm	S.L.R. inch	L.C.C.			
								Single(kg)	Dual(kg)	A.P.(kPa)	A.P.(PSI)
CN 10.00R20	149 146K	18PR	18.0	7.5	1054	278	19.13	3250	3000	930	135
	152/149K	18PR	18.0	8.0	1085	293	19.65	3550	3250	930	135
11.00R20	152/149K	20PR	18.0	8.0	1085	293	19.65	3550	3250	930	135
12.00R20	156/153K	20PR	18.0	8.5	1136	315	20.31	4000	3650	900	130
12.00R20	156/153K	22PR	18.0	8.5	1136	315	20.31	4000	3650	900	130
12R22.5	152/149K	18PR	18.0	9.00	1085	300	19.84	3550	3250	930	135
12R22.5	152/149K	20PR	18.0	9.00	1085	300	19.84	3550	3250	930	135



Horizontal tread block design



Large central block pattern



Asymmetric sidewall design

Features

Benefits

Better traction and strong grip on non-paved roads

Great impact resistance designed for tough road conditions

Low heat generation and reduces stone retention

Other Features & Benefits

- Strengthened carcass material design and extra protective layer improve load bearing capacity
- New low-heat rubber compound combined with an open shoulder design ensure reduction of heat build-up in the shoulder and rate of damage



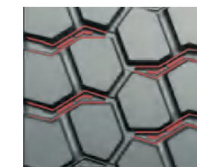
SDM20



Durable Heavy Loader

The SDM20 is a drive tire engineered for short distance travel, within 100km, in mixed road applications and allows for 250% overloading capacity while driving within 60km/h.

Size	L.I. / S.R.	P.R.	T.D. mm	RIM inch	O.D. mm	S.W. mm	S.L.R. inch	L.C.C.				
								Single(kg)	Dual(kg)	A.P.(kPa)	A.P.(PSI)	
CN	12.00R20	156/153J	20PR	21.0	8.5	1136	315	20.31	4000	3650	900	130
	12.00R20	156/153J	22PR	21.0	8.5	1136	315	20.31	4000	3650	900	130



Features

Widened driving surface and large lug tread design

Deepened tread and criss-crossing grooves

Stepped tread groove walls and tread groove nodules

Benefits

Improve grip and offer exceptional handling performance

Overall greater safety when driving on curved and steep roads

Effectively reduce stone retention



SDO90



Superior Load Capacity

The SDO90 is an all position tire for heavy-duty mining trucks with 250% load capacity traveling in extreme off-road conditions.

Size	L.I. / S.R.	P.R.	T.D. mm	RIM inch	O.D. mm	S.W. mm	S.L.R. inch	L.C.C.				
								Single(kg)	Dual(kg)	A.P.(kPa)	A.P.(PSI)	
CN	12.00R20	156/153F	20PR	25.0	8.5	1136	315	20.31	4000	3650	900	130
	12.00R20	156/153F	22PR	25.0	8.5	1136	315	20.31	4000	3650	900	130



Features

Large main blocks

Circumferential strip pattern in the middle of tire tread

Wide main groove

Benefits

Puncture, cut and chip resistant tire designed for harsh road conditions

Good impact resistance

Strong traction and skid resistance performance

Other Features & Benefits

- Rubber blocks at the bottom of the grooves reduce stone retention
- Strong carcass material design and extra protective layer improve load capacity
- Special rubber compounding is specifically designed for use in mines improves cut resistance and reduce chances of tire burst



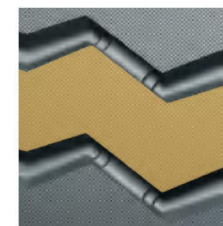
S930



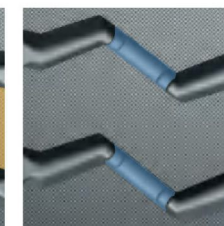
Heavy-Duty Mining

The S930 is an all position tire for heavy-duty mining trucks with 250% load capacity traveling in extreme off-road conditions.

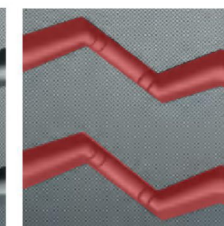
Size	L.I. / S.R.	P.R.	T.D. mm	RIM inch	O.D. mm	S.W. mm	S.L.R. inch	L.C.C.				
								Single(kg)	Dual(kg)	A.P.(kPa)	A.P.(PSI)	
CN	10.00R20	149/146F	18PR	22.0	7.5	1054	278	19.13	3250	3000	930	135
	11.00R20	152/149F	18PR	23.0	8.0	1085	293	19.65	3550	3250	930	135
	11.00R20	152/149F	20PR	23.0	8.0	1085	293	19.65	3550	3250	930	135
	12.00R20	156/153F	20PR	23.5	8.5	1136	315	20.31	4000	3650	900	130
	12.00R20	156/153F	22PR	23.5	8.5	1136	315	20.31	4000	3650	900	130
	12R22.5	152/149F	18PR	23.0	9.00	1085	300	19.84	3550	3250	930	135
	12R22.5	152/149F	20PR	23.0	9.00	1085	300	19.84	3550	3250	930	135



Large main blocks



Wide central ribs



Pattern block connected by ribs

Features

Benefits

Other Features & Benefits

The large main blocks are designed to improve resistance to punctures, cuts and ruptures, perfect for tough road conditions

The central widened ribs connected improve impact resistance specifically for harsh road conditions

Wide and lateral main grooves take into account traction and skid resistance performance

- The rubber blocks placed at the groove bottom prevent cracking



SFR33

Heavy Loader

The SFR33 is a steer position tire for heavy-duty trucks with 210% load capacity traveling on mixed road applications.



Size	L.I. / S.R.	P.R.	T.D. mm	RIM inch	O.D. mm	S.W. mm	S.L.R. inch	L.C.C.			
								Single(kg)	Dual(kg)	A.P.(kPa)	A.P.(PSI)
CN 12R22.5	154/151K	20PR	175	9.00	1085	300	19.84	3750	3450	970	140



S813A

Heavy Loader

The S813A is a steer position tire for heavy-duty trucks with 210% load capacity traveling on mixed road applications.



Size	L.I. / S.R.	P.R.	T.D. mm	RIM inch	O.D. mm	S.W. mm	S.L.R. inch	L.C.C.			
								Single(kg)	Dual(kg)	A.P.(kPa)	A.P.(PSI)
CN 12R22.5	152/149K	20PR	18.5	9.00	1085	300	19.84	3550	3250	930	135



S726

Puncture and Abrasion Resistance



The S726 boasts a sturdy tire structure to improve load-bearing capacity. Its special tread design boosts overall safety and improves self-cleaning capabilities of the tire. The deepened tread depth helps to promote even tread wear which offers longer mileage.

Size	L.I. / S.R.	P.R.	T.D. mm	RIM inch	O.D. mm	S.W. mm	S.L.R. inch	L.C.C.			
								Single(kg)	Dual(kg)	A.P.(kPa)	A.P.(PSI)
CN 12.00R20	154/151J	18PR	20.5	8.5	1136	315	20.31	3750	3450	830	120



S790

High Wear Resistance



The S790 utilizes sturdy tread blocks that provide powerful traction and off-road mobility.

Size	L.I. / S.R.	P.R.	T.D. mm	RIM inch	O.D. mm	S.W. mm	S.L.R. inch	L.C.C.			
								Single(kg)	Dual(kg)	A.P.(kPa)	A.P.(PSI)
CN 12R22.5	152/149G	18PR	24.0	9.00	1096	300	19.84	3550	3250	930	135
CN 12R22.5	152/149K	18PR	24.0	9.00	1096	300	19.84	3550	3250	930	135



S913

Strong Traction



The S913 is a drive position tire suitable for On / Off Road.

Size	L.I. / S.R.	P.R.	T.D. mm	RIM inch	O.D. mm	S.W. mm	S.L.R. inch	L.C.C.			
								Single(kg)	Dual(kg)	A.P.(kPa)	A.P.(PSI)
CN 12R22.5	152/149K	18PR	20.5	9.00	1096	300	19.84	3550	3250	930	135



S917

Puncture Resistance, Driving Comfort



The S917 is a drive tire engineered to work in demanding applications such as mining, construction, and logging. The tread design is an aggressive multi-lug design which the enhanced rubber compound improves cut and chunking resistance. Open shoulder design delivers superior stability and uniform wear. The deep 31/32" tread depth offers a longer tread life and exceptional fuel efficiency.

Size	L.I. / S.R.	P.R.	T.D. mm	RIM inch	O.D. mm	S.W. mm	S.L.R. inch	L.C.C.			
								Single(kg)	Dual(kg)	A.P.(kPa)	A.P.(PSI)
CN 11.00R20	152/149F	18PR	23.5	8.0	1096	293	19.65	3550	3250	930	135
CN 12.00R20	158/155F	22PR	23.5	8.5	1136	315	20.31	4250	3875	970	140
CN 12R22.5	152/149G	18PR	23.5	9.00	1096	300	19.84	3550	3250	930	135



S918

Cut Resistance



The S918 is specially designed for short to mid-range transportation on non-paved roads. The bead structure improves tire durability while the tread compound improves puncture and tear resistance. The large lug design improves traction.

Size	L.I. / S.R.	P.R.	T.D. mm	RIM inch	O.D. mm	S.W. mm	S.L.R. inch	L.C.C.			
								Single(kg)	Dual(kg)	A.P.(kPa)	A.P.(PSI)
CN 11.00R20	152/149F	18PR	24.0	8.0	1096	293	19.65	3550	3250	930	135
CN 12.00R20	154/151F	18PR	24.0	8.5	1136	315	20.31	3750	3450	830	120



SDO91

Strong Mining Tire



The SDO01 is an all position tire for heavy-duty mining trucks with 230% load capacity traveling in extreme off-road conditions.

Size	L.I. / S.R.	P.R.	T.D. mm	RIM inch	O.D. mm	S.W. mm	S.L.R. inch	L.C.C.			
								Single(kg)	Dual(kg)	A.P.(kPa)	A.P.(PSI)
CN 11.00R20	152/149F	18PR	24.0	8.0	1096	293	19.65	3550	3250	930	135
CN 11.00R20	152/149F	20PR	24.0	8.0	1096	293	19.65	3550	3250	930	135

ON&OFF ROAD

**ROADX
TIRE**

AP886

AP863



The RoadX AP886 is an all-position tire for trucks traveling in on and off-road applications.

TIRE FEATURES:

- Specialized groove design improves directional stability and skid resistance for various applications.
- Tread design and groove nodules reduce stone retention.
- Shoulder grooves improve heat dissipation.
- Fine tread grooves improve driving safety on wet roads.



The RoadX AP863 is a steer position tire for trucks traveling in on and off-road applications.

TIRE FEATURES:

- Specialized groove design improves directional stability and skid resistance for various applications.
- Tread design and groove nodules reduce stone retention.
- Shoulder grooves improve heat dissipation.
- Fine tread grooves improve driving safety on wet roads.



	Size	Standard Rim(inch)	PR	Load				Pressure				Load Index		Tread Depth (mm)	Speed Grade	Inflated Tire Dimension(mm)	
				Kg		Lbs		Kpa		Psi		S	D			D	B
				S	D	S	D	S	D	S	D						
CN	10.00R20	7.5	18	3250	3000	7160	6610	930	930	135	135	149	146	15.2	K	1054	278
CN	11.00R20	8	18	3550	3250	7830	7160	930	930	135	135	152	149	15.7	K	1085	293
CN	11.00R20	8	20	3550	3250	7830	7160	930	930	135	135	152	149	15.7	K	1085	293
CN	12.00R20	8.5	20	4000	3650	8820	8050	900	900	130	130	156	153	15.5	K	1125	315
CN	12.00R20	8.5	22	4000	3650	8820	8050	900	900	130	130	156	153	15.5	K	1125	315

	Size	Standard Rim(inch)	PR	Load				Pressure				Load Index		Tread Depth (mm)	Speed Grade	Inflated Tire Dimension(mm)	
				Kg		Lbs		Kpa		Psi		S	D			D	B
				S	D	S	D	S	D	S	D						
CN	12R22.5	9.00	20	3550	3250	7830	7160	930	930	135	135	152	149	18.5	K	1085	300

MS678

MS688



The RoadX MS678 is a drive position tire for trucks traveling in on and off-road applications.

TIRE FEATURES:

- Wide running surface and tread groove design improve traction and grip.
- Deep grooves improve driving safety.
- Groove nodules effectively reduce stone retention.
- Strengthened structure design improves load bearing capacity.
- Open shoulder design and rubber compound effectively dissipate heat.



The RoadX MS688 is a drive position tire for trucks traveling in on and off-road applications.

TIRE FEATURES:

- Tread groove and sipe design offer exceptional wet skid resistance.
- Large central tread blocks effectively improve impact resistance.
- Groove design improves heat dissipation and reduces stone retention.
- Strengthened structure design improves load bearing capacity.



	Size	Standard Rim(inch)	PR	Load				Pressure				Load Index		Tread Depth (mm)	Speed Grade	Inflated Tire Dimension(mm)	
				Kg		Lbs		Kpa		Psi							
				S	D	S	D	S	D	S	D	S	D			D	B
CN	12.00R20	8.5	20	4000	3650	8820	8050	900	900	130	130	156	153	21	J	1125	315
CN	12.00R20	8.5	22	4000	3650	8820	8050	900	900	130	130	156	153	21	J	1125	315

	Size	Standard Rim	PR	Load				Pressure				Load Index		TreadDepth (mm)	Speed Grade	Inflated Tire Dimension (mm)	
				Kg		lbs		Kpa		Psi							
				S	D	S	D	S	D	S	D	S	D			S	D
CN	10.00R20	7.5	18	3250	3000	7160	6610	930	930	135	135	149	146	18	K	1054	278
CN	11.00R20	8	18	3550	3250	7830	7160	930	930	135	135	152	149	18	K	1085	293
CN	11.00R20	8	20	3550	3250	7830	7160	930	930	135	135	152	149	18	K	1085	293
CN	12.00R20	8.5	20	4000	3650	8820	8050	900	900	130	130	156	143	18	K	1125	315
CN	12.00R20	8.5	22	4000	3650	8820	8050	900	900	130	130	156	143	18	K	1125	315
CN	12R22.5	9.00	18	3550	3250	7830	7160	930	930	135	135	152	149	18	K	1085	300
CN	12R22.5	9.00	20	3550	3250	7830	7160	930	930	135	135	152	149	18	K	1085	300

OFF ROAD

DT980

DT989



The RoadX DT980 is an all position tire for trucks driving in off-road applications.

TIRE FEATURES:

- Large tread blocks effectively improve puncture and cut resistance.
- Central tread grooves help to effectively improve impact resistance, traction, and braking.
- Step-like grooves and groove nodules improve puncture resistance.
- Enhanced tire structure increases load bearing capabilities.
- Tread compound effectively reduces heat buildup to extend tread life.



The RoadX DT989 is an all position tire for trucks traveling in severe service applications.

TIRE FEATURES:

- Large lug design effectively improves the tire's puncture, cut, and chunking resistance.
- The central, interconnected rib offers exceptional durability for severe service applications.
- Tread grooves feature "stone ejectors" that effectively reduce stone retention.



	Size	Standard Rim(inch)	PR	Load				Pressure				Load Index		Tread Depth (mm)	Speed Grade	Inflated Tire Dimension(mm)	
				Kg		Lbs		Kpa		Psi							
				S	D	S	D	S	D	S	D	S	D			D	B
CN	12.00R20	8.5	20	4000	3650	8820	8050	900	900	130	130	156	153	25	F	1125	315
CN	12.00R20	8.5	22	4000	3650	8820	8050	900	900	130	130	156	153	25	F	1125	315

	Size	Standard Rim(inch)	PR	Load				Pressure				Load Index		Tread Depth (mm)	Speed Grade	Inflated Tire Dimension(mm)	
				Kg		Lbs		Kpa		Psi							
				S	D	S	D	S	D	S	D	S	D			D	B
CN	10.00R20	7.5	18	3250	3000	7160	6610	930	930	135	135	149	146	22	F	1054	278
CN	11.00R20	8	18	3550	3250	7830	7160	930	930	135	135	152	149	23	F	1085	293
CN	11.00R20	8	20	3550	3250	7830	7160	930	930	135	135	152	149	23	F	1085	293
CN	12.00R20	8.5	20	4000	3650	8820	8050	900	900	130	130	156	153	23.5	F	1125	315
CN	12.00R20	8.5	22	4000	3650	8820	8050	900	900	130	130	156	153	23.5	F	1125	315

OFF ROAD

DT982



The RoadX DT982 is an all position tire for trucks driving in off-road applications.

TIRE FEATURES:

- Large tread blocks effectively improve puncture and cut resistance.
- Central tread grooves help to effectively improve impact resistance, traction, and braking.
- Step-like grooves and groove nodules improve puncture resistance.
- Enhanced tire structure increases load bearing capabilities.
- Tread compound effectively reduces heat buildup to extend tread life.



	Size	Standard Rim(inch)	PR	Load				Pressure				Load Index		Tread Depth (mm)	Speed Grade	Inflated Tire Dimension(mm)	
				Kg		Lbs		Kpa		Psi							
				S	D	S	D	S	D	S	D	S	D				
CN	11.00R20	8.0	18	3550	3250	7830	7160	930	930	135	135	152	149	24	F	1096	293
CN	11.00R20	8.0	20	3550	3250	7830	7160	930	930	135	135	152	149	24	F	1096	293